

Thomas Pond Improvement Association

Dam Keeper's Report
June 2026

Tom McCarthy

SOUTH CASCO

Brown Ave

Quaker Ridge Rd

Thomas Pond

Raymond Carey Rd

302

121

302

Thomas Pond Dam Keeping Data Summary

1 Jan 2025 to 31 December 2025



Observation Summary 01 Jan 25 to 31 Dec 25			
Dam Monitor/Keeper	Count	In Person	Camera
FJ	155	34	121
RRC	9	9	0
SMC	182	50	133
TM	13	13	0
TP	55	32	23
Total Log Entries	387	110	277

Actions Taken 01 Jan 25 to 31 Dec 25						
Description	Count	FJ	RRC	SMC	TM	TP
Adjust Stoplogs	23	16	3	0	9	10
Clean Rulers	27	10	2	4	5	15
Remove Debris	31	15	4	10	5	10
Clear Ice/Snow	8	1	1	6	0	0
Clean Camera	3	1	0	1	0	1
See Notes	34	22	4	9	3	11
Other	2	2	0	0	0	0

Thomas Pond Dam Keeping Data Summary

1 Jan 2025 to 31 December 2025



	01 Jan 25 to 31 Dec 25	
Stop Log Adjustments	Times	Total Change
Add Log(s)	10	27.25
Remove Log(s)	14	-30.5

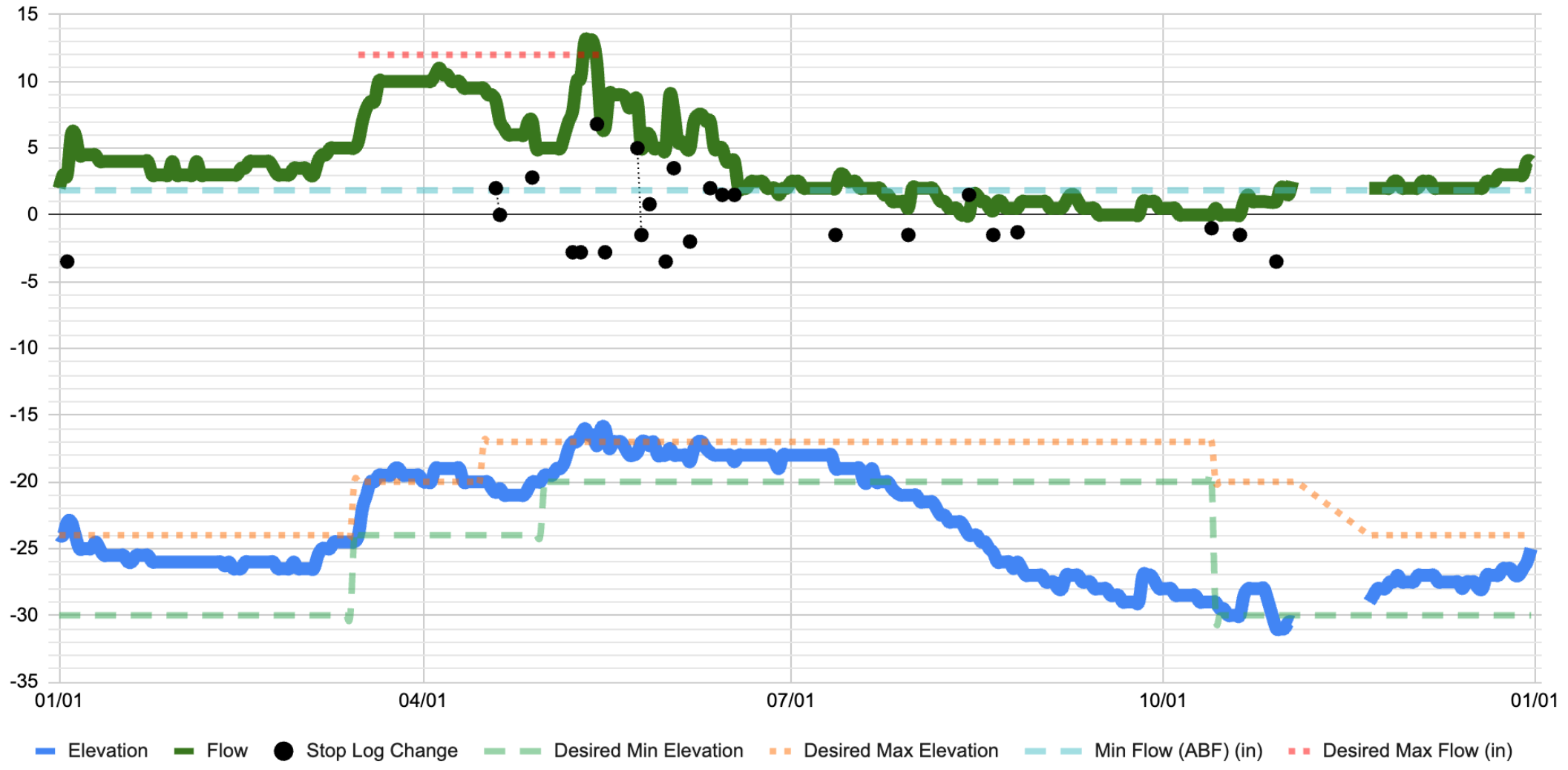
Water Flows Over the Dam	2024 Days	2025 Days
≥ ABF	295	250
≥ Min Elevation/< ABF	2	16
Below Min Elevation & ABF	35	76
Over Max Flow	25	3

Pond Elevation	2024 Days	2025 Days
In Range	190	233
Near Range (±1.5")	45	43
Below Range	92	69
Above Range	32	0

Observation Summary 01 Jan 25 to 31 Dec 25			
Dam Monitor/ Keeper	Count	In Person	Camera
Log Entries	387	110	277

Action Summary 01 Jan 25 to 31 Dec 25	
Description	Count
Adjust Stoplogs	23
Clean Rulers	27
Remove Debris	31
Clear Ice/Snow	8
Clean Camera	3
See Notes	34
Other	2

2025 Thomas Pond Elevation and Flow Over the Dam



Dam Conditions

The Thomas Pond Dam Repair Report

- The Dam repairs were completed.
- Additional concrete removal to a depth of about 12” was required. The plan was 4 to 6”
- The Steel gate was replaced without valve.
- The concrete pour was conducted on Friday 11/14/25
- The dam resumed normal operations the week of 11/24/25
- All stop logs replaced with tongue and groove red oak to reduce seepage
- Inspection of the Dam June 2026. Some non-structural cracking remain, missed during repairs will be filled this summer.





























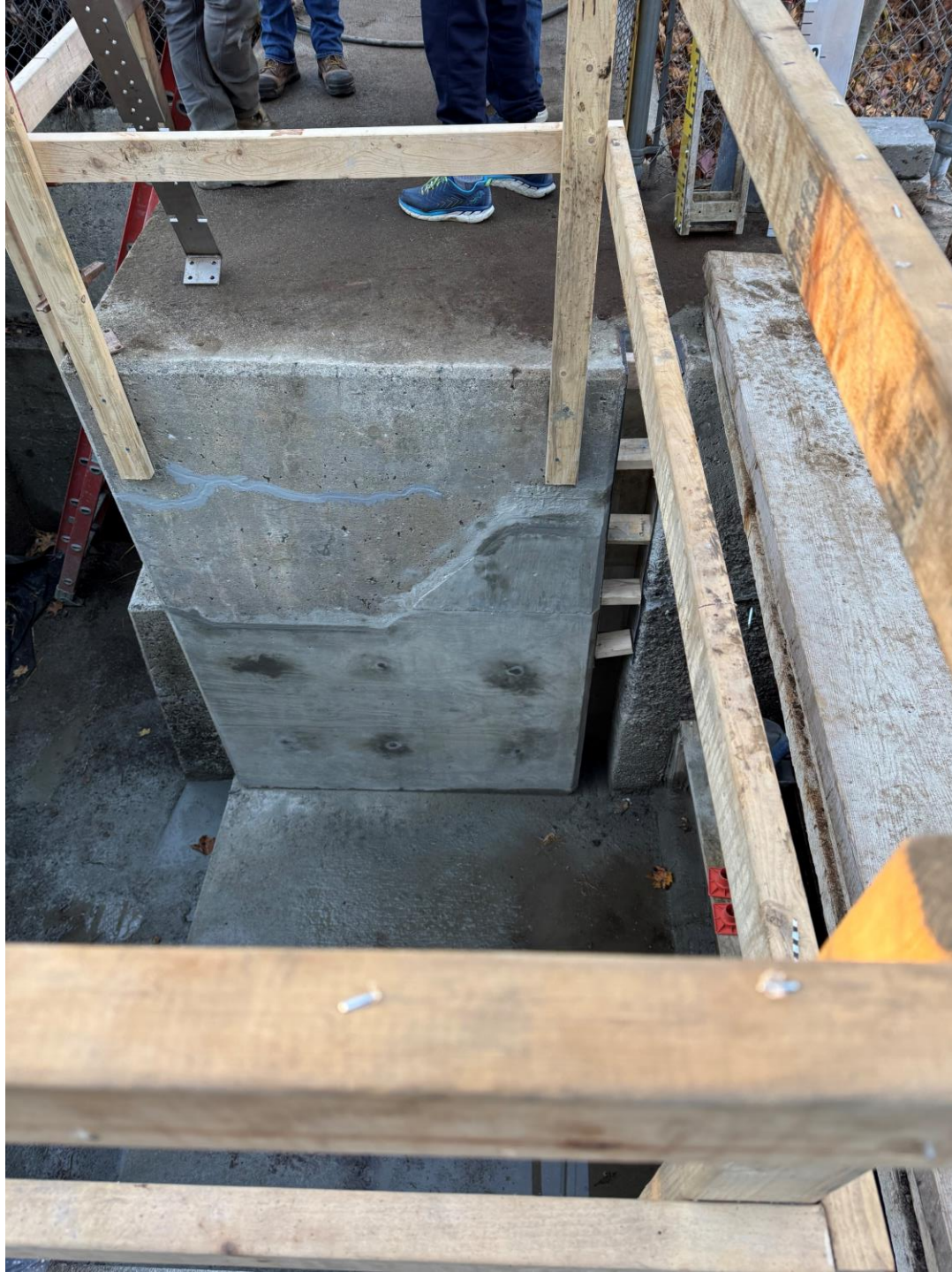


TPIA

Thomas Pond Improvement
Association



Fittings to pump
high pressure
polymer crack filler
into small cracks



TPIA

Thomas Pond Improvement
Association



Questions